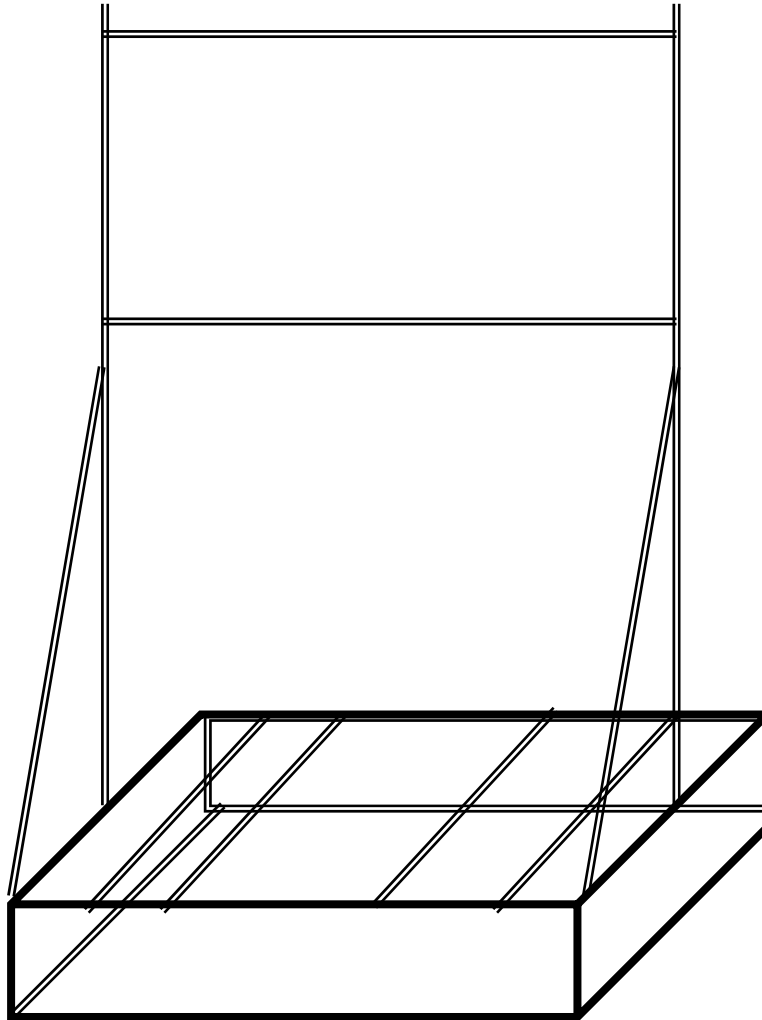


SSKPI_RACK



Aquarius Technologies Pty Ltd

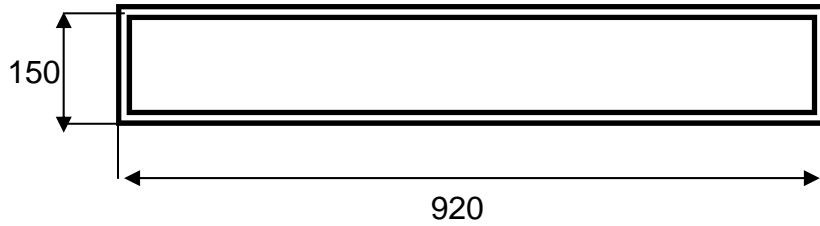
Dwg No : SSKPI_RACK

Date : 6 Mar 06

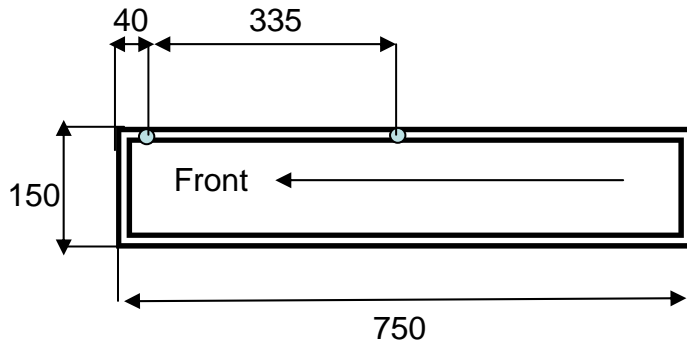
Revision : Original

Drawn by : M Bailey

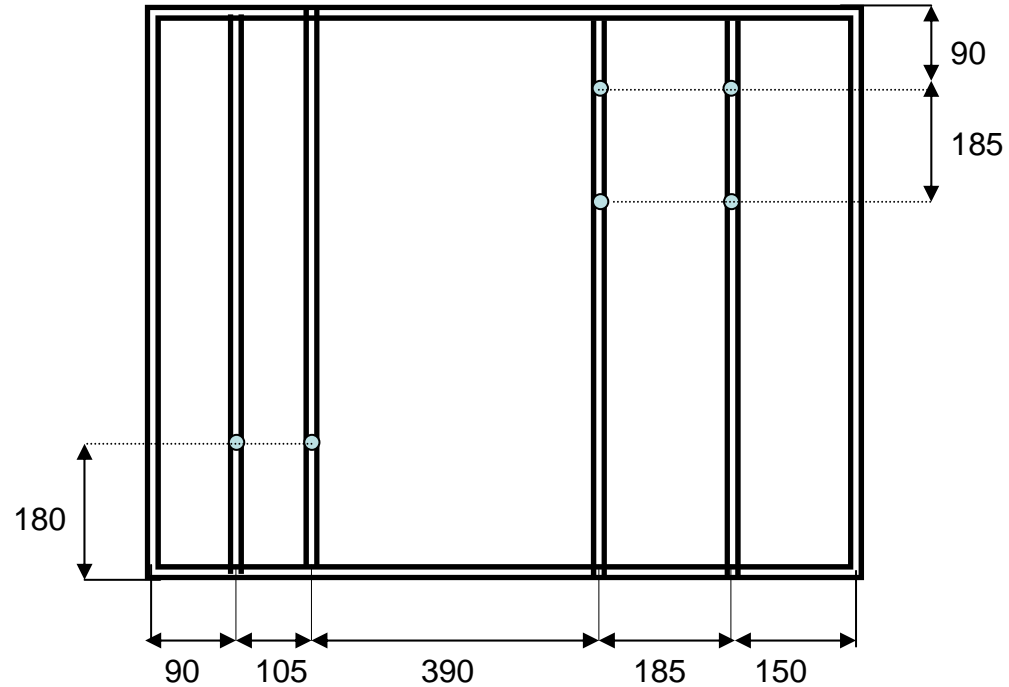
SS_BASE



Front View



Side View



Top View

Notes!

1. Material 25mm Stainless Square Tube
2. All inside members measurement to centre of tube
3. All holes 8.5mm diameter
4. Overall lengths to outside of tube
5. 4 X 8.5mm holes in base for mounting to floor

Aquarius Technologies Pty Ltd

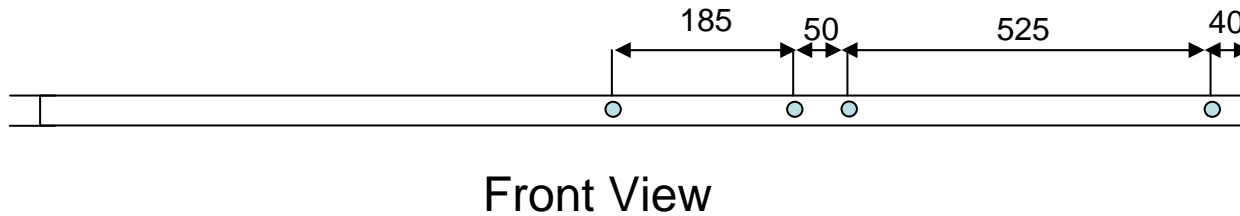
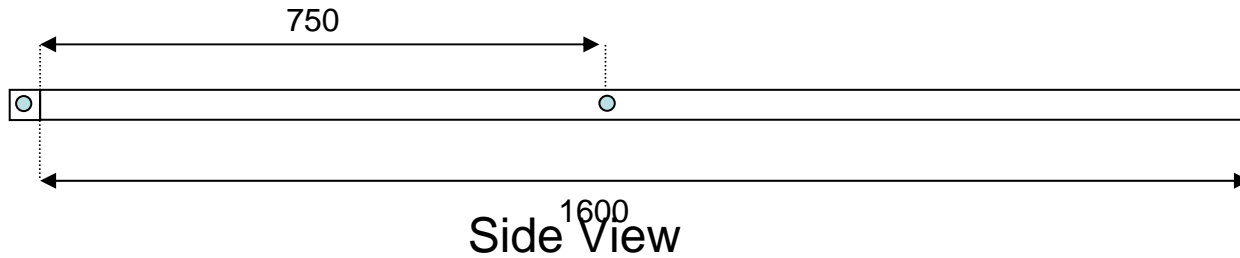
Dwg No : SS_BASE

Date : 6 Mar 06

Revision : ORIGINAL

Drawn by : M Bailey

SS_UPRIGHT



X2

Notes!

1. Material 25mm Stainless Square Tube
2. All inside members measurement to centre of tube
3. All holes 8.5mm diameter
4. Overall lengths to outside of tube

Aquarius Technologies Pty Ltd

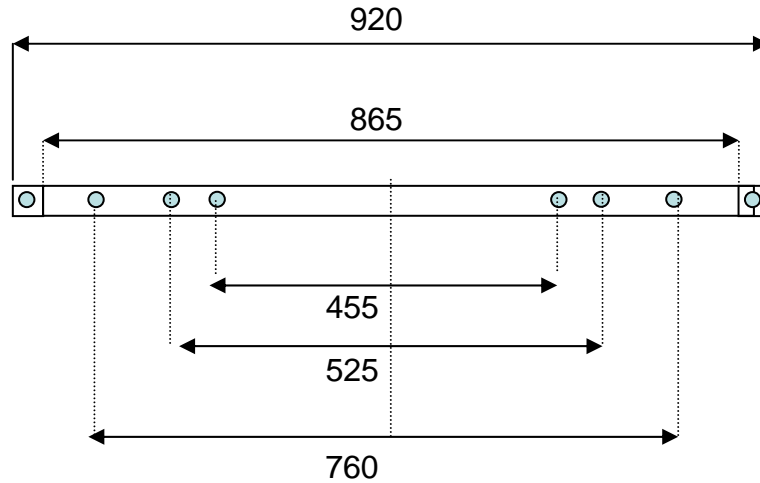
Dwg No : SS_UPRIGHT

Date : 6 Mar 06

Revision : Rev 2 (Braceholes moved to 750mm)

Drawn by : M Bailey

SS_CROSS



Front View

X2

Notes!

1. Material 25mm Stainless Square Tube
2. All inside members measurement to centre of tube
3. All holes 8.5mm diameter
4. Overall lengths to outside of tube

Aquarius Technologies Pty Ltd

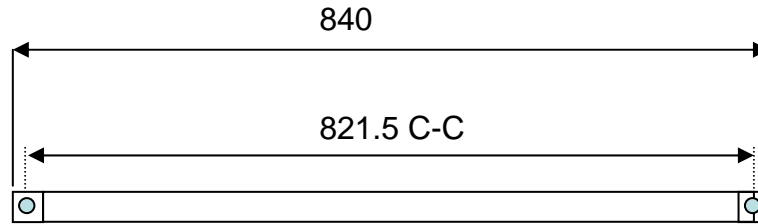
Dwg No : SS_CROSS

Date : 6 Mar 06

Revision : Rev 1 (2 X holes added
760mm apart even spacing on length)

Drawn by : M Bailey

SS_BRACE



Side View

X2

Notes!

1. Material 4mm Stainless Flat Bar
2. All holes 8.5mm diameter
3. Round ends of Brace

Aquarius Technologies Pty Ltd

Dwg No : SS_BRACE

Date : 6 Mar 06

Revision : 1 (Brace length change)

Drawn by : M Bailey