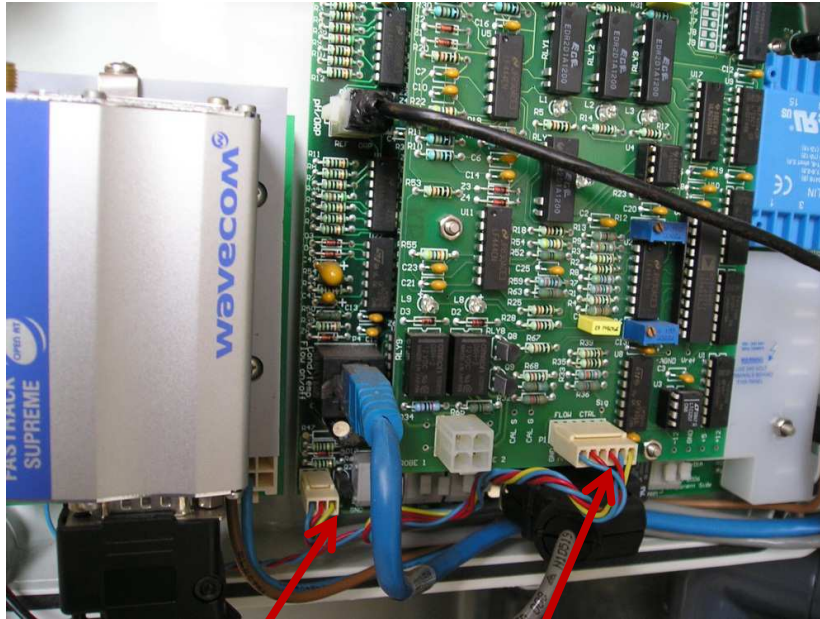


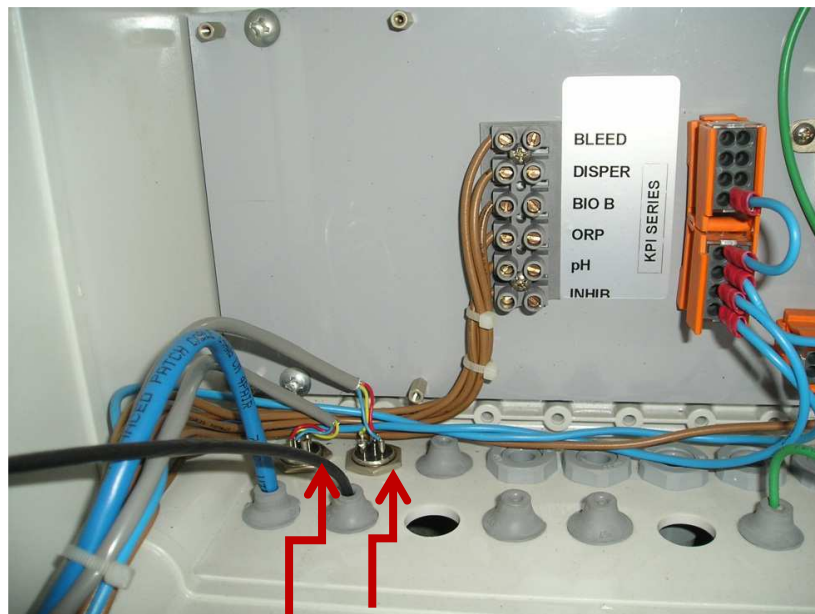
## Troubleshooting of KPI3 Flow Velocity Problem

In order to discover the cause of the problem the following parts should be checked:

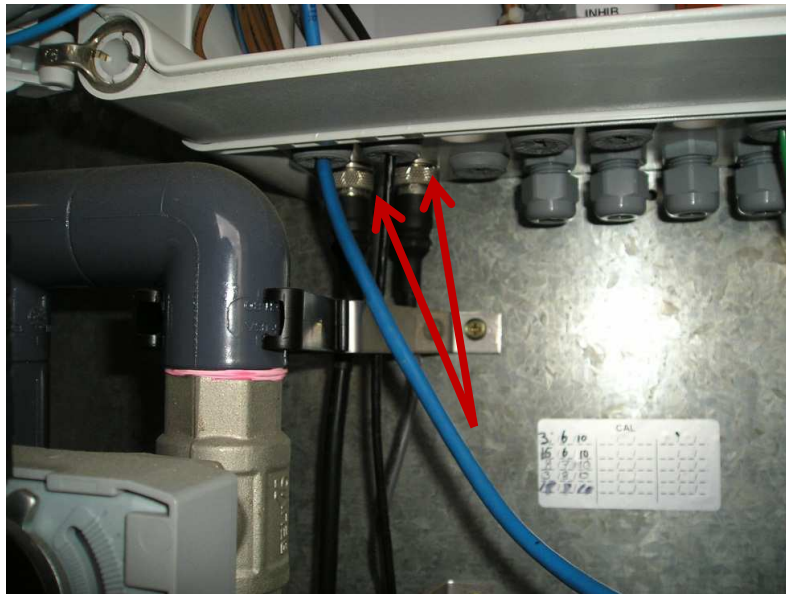
1. Ensure the following connections to pins are tight



2. Check the following soldered wires have not snapped off.



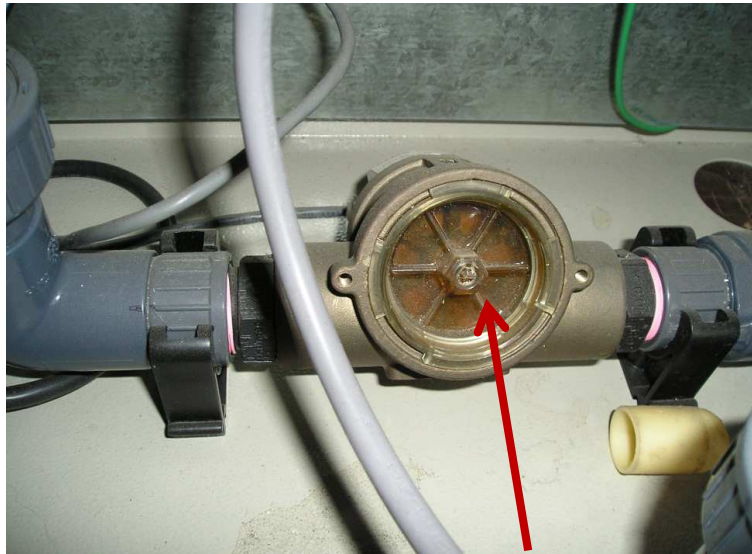
3. Check the Water Meter and Velocity BNC connections are tightened properly (under the controller box)



4. Make sure strainer is not blocked. Clean the strainer if needed.



5. Check the flow meter is spinning when there is flow in the manifold. You may need to use a flashlight for this and turn the flow on and off many times. Any deposits or algae may block the flow meters and prevent flow measurements. Clean the Flow Meter in case of Algae or other deposits.



6. Using AquaReporter set the flow velocity mode to Auto and Change the velocity set points to different numbers (e.g., 0.5m/s, 1.5m/s and 2.5m/s) and watch the flow control valve each time. The Flow control valve should automatically rotate to different positions to set the velocity. If this has not happened, the Flow Meter is blocked and hasn't sent the correct signals to Flow control valve. Clean or replace the flow meter.

